



**Sponsors and Cooperating Parties:** We would like to invite your organization to be a sponsor or cooperating party supporting Wetlands 2007. There are many ways to support the national symposium. If interested, please contact Jeanne Christie (207) 892-3399 or [jeanne.christie@aswm.org](mailto:jeanne.christie@aswm.org) or visit <http://www.aswm.org/calendar/wetlands2007/wetlands2007.htm>.

### Atlantic White Cedar: \$20,000 and over\*



**Benefits:**

- Name/link on conference Website
- 1-page ad in program agenda (Submitted by July 10<sup>th</sup>)\*
- Accredited in program agenda
- Ten registrations to full conference
- 1 8x10 Exhibit space Tuesday-Thursday
- Company name on conference signage

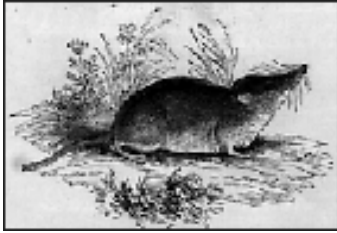
### Red-Cockaded Woodpecker: \$10,000



**Benefits:**

- Name/link on conference Website
- 1-page ad in program agenda (Submitted by July 10<sup>th</sup>)\*
- Accredited in program agenda
- Five registrations to full conference
- 1 8x10 Exhibit space Tuesday-Thursday
- Company name on conference signage

## Dismal Swamp Shrew: \$5,000



### **Benefits:**

- Name/link on conference Website
- 1/2 page ad in program agenda (Submitted by July 10<sup>th</sup>)\*
- Accredited in program agenda
- Three registrations to full conference
- 1 8x10 Exhibit space Tuesday-Thursday
- Company name on conference signage

## Canebrake Rattlesnake: \$1,000



### **Benefits:**

- Name/link on conference Website
- ¼ page add in program agenda (Submitted by July 10<sup>th</sup>)\*
- Accredited in program agenda
- One registration to full conference
- 1 8x10 Exhibit space Tuesday-Thursday
- Company name on conference signage

## Beach Tiger Beetle: \$500



### **Benefits:**

- Name/link on website and program agenda
- Accredited in program agenda
- Display space on 3x6 tables in conference area

**If you would like to become a sponsor, please fill out the attached Sponsor Commitment Form and return by July 10, 2007.\*\***

**\*Special event sponsorship** – Atlantic White Cedar level sponsors may be full or partial sponsors of receptions or luncheons subject to availability. Sponsorship of other activities such as field trips, dedicated sessions, etc. is determined based on sponsorship levels and/or in-kind assistance. If interested, please contact Laura at (207) 892-3399 or [laura@aswm.org](mailto:laura@aswm.org).

\*\*Some benefits, such as exhibit space or program agenda ads may not be available after July 10, 2007.

### **Questions Regarding Program Please Contact:**

Jeanne Christie, Executive Director, Association of State Wetland Managers, Inc.  
2 Basin Road, Windham, ME 04062  
(207) 892-3399; Fax: (207) 892-3089; [jeanne.christie@aswm.org](mailto:jeanne.christie@aswm.org)

### **Questions Regarding Sponsorship and Exhibits Please Contact:**

Laura Burchill, Association of State Wetland Managers, Inc.  
2 Basin Road, Windham, ME 04062  
(207) 892-3399; Fax: (207) 892-3089; [laura@aswm.org](mailto:laura@aswm.org)